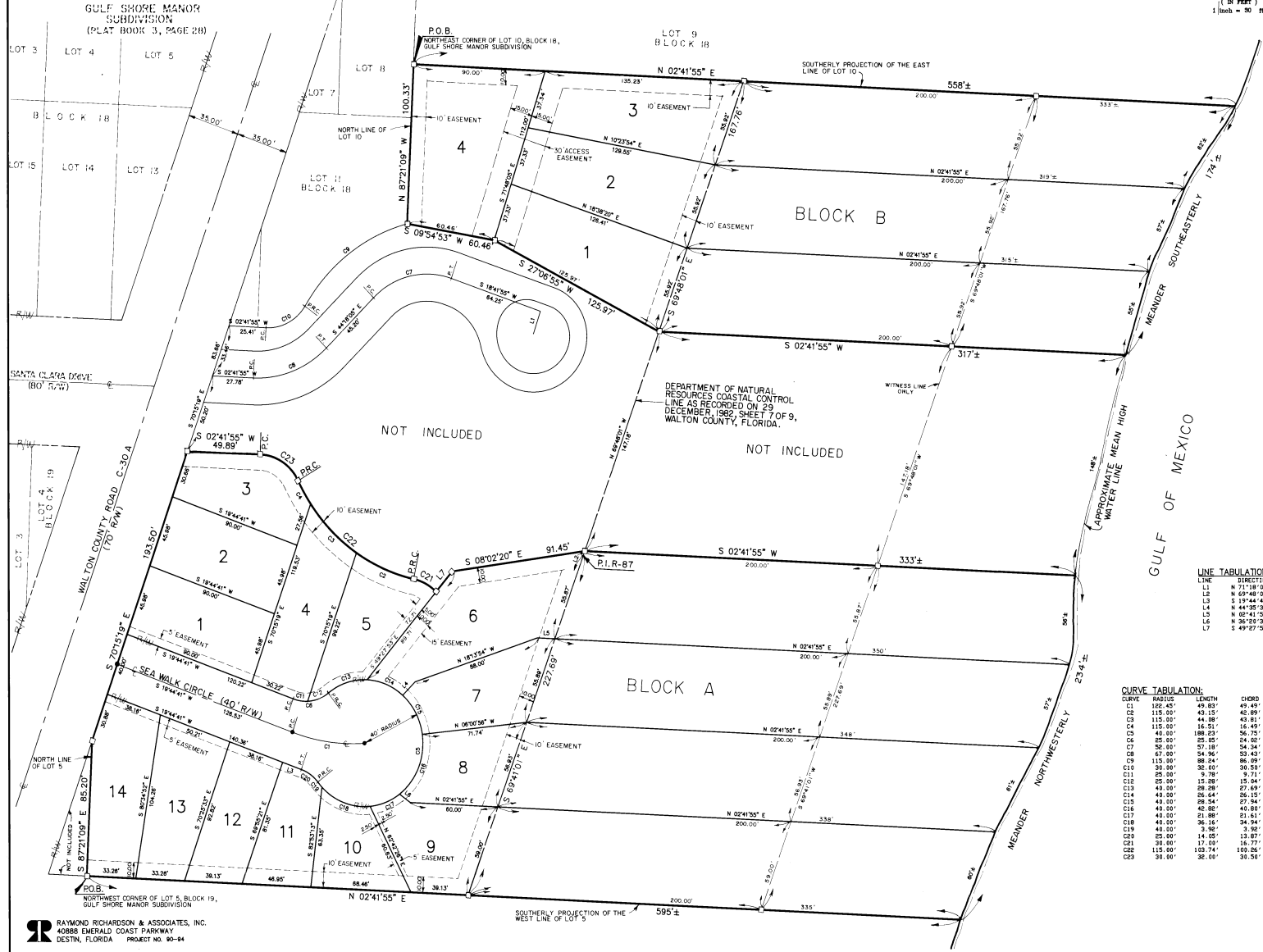
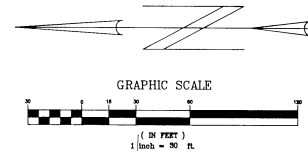


SEA WALK SUBDIVISION

A RESUBDIVISION OF A PORTION OF GULF SHORE MANOR
SUBDIVISION IN SECTION 23, TOWNSHIP 3 SOUTH,
RANGE 19 WEST, WALTON COUNTY, FLORIDA



LINE TABULATION:

LINE	DIRECTION	DISTANCE
L1	N 71°18'03" W	15.00'
L2	N 69°40'01" W	31.23'
L3	S 19°44'41" W	13.83'
L4	N 44°25'50" E	12.26'
L5	N 02°41'55" E	16.00'
L6	N 02°41'55" E	9.25'
L7	S 49°27'59" E	17.00'

CURVE TABULATION:

CURVE	CHORD	CHORD BEARING	CHORD LENGTH	CHORD BEARING	DELTA
C1	122.45'	49.83°	49.49'	S 08°05'10" W	23°18'09"
C2	115.00'	42.15°	45.09'	S 22°50'44" W	21°29'48"
C3	110.00'	44.88°	43.81'	S 44°36'33" W	21°57'49"
C4	105.00'	47.61°	42.54'	S 57°45'11" W	22°30'08"
C5	100.00'	50.34°	41.21'	S 70°53'49" W	23°02'27"
C6	95.00'	53.07°	39.88'	S 84°02'27" W	23°34'46"
C7	90.00'	55.80°	38.55'	S 97°11'05" W	24°07'05"
C8	85.00'	58.53°	37.22'	S 110°19'43" W	24°39'24"
C9	80.00'	61.26°	35.89'	S 123°28'21" W	25°11'43"
C10	75.00'	64.00°	34.56'	S 136°36'59" W	25°44'02"
C11	70.00'	66.73°	33.23'	S 149°45'37" W	26°16'21"
C12	65.00'	69.46°	31.90'	S 162°54'15" W	26°48'40"
C13	60.00'	72.20°	30.57'	S 176°02'53" W	27°20'59"
C14	55.00'	74.93°	29.24'	S 189°11'31" W	27°53'18"
C15	50.00'	77.66°	27.91'	S 202°20'09" W	28°25'37"
C16	45.00'	80.40°	26.58'	S 215°28'47" W	28°57'56"
C17	40.00'	83.13°	25.25'	S 228°37'25" W	29°30'15"
C18	35.00'	85.86°	23.92'	S 241°46'03" W	30°02'34"
C19	30.00'	88.60°	22.59'	S 254°54'81" W	30°34'53"
C20	25.00'	91.33°	21.26'	S 268°02'59" W	31°07'12"
C21	20.00'	94.06°	19.93'	S 281°11'37" W	31°39'31"
C22	15.00'	96.80°	18.60'	S 294°20'15" W	32°11'50"
C23	10.00'	99.53°	17.27'	S 307°28'53" W	32°44'09"
C24	5.00'	102.26°	15.94'	S 320°37'31" W	33°16'28"
C25	0.00'	105.00°	14.61'	S 333°46'09" W	33°48'47"

RAYMOND RICHARDSON & ASSOCIATES, INC.
40888 EMERALD COAST PARKWAY
DESTIN, FLORIDA PROJECT NO. 90-94